

# Willapa Harbor Hospital

South Bend, Washington

## Community Health Needs Assessment



2019 - 2021

# Table of Contents

Introduction .....	1
Methods .....	1
CHNA Process .....	1
CHNA Advisory Committee .....	2
Community Served Determination.....	2
Data Collection and Analysis.....	3
Prioritization of Key Findings.....	5
Existing Health Care and other Facilities and Resources.....	7
Evaluation of Previous Community Health Improvement Plan .....	7
Appendix 1 – List of Interviewees for Community Input	
Appendix 2 – Demographic, Primary, and Secondary Data	
Appendix 3 – Existing Healthcare Resources	

## Introduction

Willapa Harbor Hospital (“Willapa Harbor”) is a Critical Access Hospital located in South Bend, Washington, serving northern Pacific County and the greater Willapa Harbor area in Southwest Washington. Their goal is to provide quality, cost effective healthcare to their residents and visitors. Willapa Harbor is a community owned and operated facility. Willapa Harbor, in partnership with their physicians, provides state of the art, personalized diagnostic and medical treatment as well as health education for individuals who seek or need quality health care services. Their vision is to work alongside their patients for a healthier community.

As a Critical Access Hospital (“CAH”), Willapa Harbor provides a multitude of services for its community, including 24/7 emergency care services, acute care, surgery, primary care, laboratory and diagnostic services, medical imaging, respiratory therapy, and cardiac rehabilitation.

## Methods

### **Wipfli’s Role**

Wipfli LLP (“Wipfli”) facilitated the 2019 community health needs assessment (“CHNA”) process on behalf Willapa Harbor Hospital. This CHNA report was completed in compliance with the IRS requirements described in section 501(r)(3) of the Internal Revenue Code.

## CHNA Process

The following outline explains the process that Wipfli followed to conduct the CHNA. Each process is described in more detail throughout the report.

1. Formation of a CHNA advisory committee
2. Definition of the community served by Willapa Harbor
3. Data collection and Analysis
  - a. Demographics of the community
  - b. Primary data
  - c. Secondary data/Demographics
  - d. Existing health care facilities and resources
4. Identification and prioritization of community health needs and services to meet community health needs

## CHNA Advisory Committee

Leadership at Willapa Harbor formed the CHNA Advisory Committee. Advisory committee member selection was based on each member's history and knowledge of the community, hospital role, and unique vantage point in guiding the process of the CHNA. The committee was tasked with completing key objectives outlined by the IRS CHNA requirements, which included identifying health issues and prioritizing health needs within the community.

The committee consisted of the following members:

- Emmett Schuster, Interim CEO
- Renee Clements, Compliance, Quality, and Risk Director
- Bobbi Hallberg, Chief Nursing Officer
- Krisy Funkhouser, HR Manager

## Community Served Determination

For the purposes of this CHNA, the service area for Willapa Harbor was defined as the following zip codes and their corresponding cities: 98586 (South Bend), 98577 (Raymond), and 98590 (Tokeland). The service area is represented by the map below:



Source: Maptitude, 2019

Zip-code-level data from the cities that defined the service area was utilized for analyses when such data was accessible. When inaccessible, County-level data from Pacific County, Washington was used instead. Accordingly, every effort was made to ensure that the Community Health Needs Assessment is representative of the service area.

# Data Collection and Analysis

## Primary Data

Informational interviews were conducted with stakeholders and members of the community served by Willapa Harbor. The CHNA Advisory Committee identified these individuals based on their qualifications to represent the broad interest of the community served. Generally, the stakeholders included persons with special knowledge or expertise in public health and persons who represent the medically underserved and vulnerable populations in Pacific County. The stakeholders who were interviewed represented the following range of organizations:

- Area Agency on Aging
- Grays Harbor Community College
- Pacific County Public Health and Human Services Department
- Raymond Fire Department and Emergency Medical Services
- South Bend School District
- Willapa Behavioral Health
- Willapa Harbor Hospital
  - Human Resources
  - Nursing
  - Quality, Risk, and Corporate Compliance

Each stakeholder participated in a phone interview with Wipfli. The purpose of the interview was to gather input regarding the health needs that exist within Pacific County and the community Willapa Harbor serves. Stakeholders were asked their role in the community and their input on the most significant health needs, barriers to accessing healthcare services, groups or communities that are underserved from a healthcare perspective, and strengths and weaknesses of the healthcare system in the community. Responses were summarized and used to develop the key findings and prioritize the most significant healthcare needs.

## Demographic and Secondary Data Collection

Demographic and secondary data was collected from these major sources:

- County Health Rankings
- ESRI Business Information Solutions, 2019 (Based on US Census Data)
- Healthier Washington
- Pacific County Resource Directory
- Washington Bureau of Vital Statistics
- Washington State Department of Health

The secondary data includes a variety of county, state, and national measures to present a community profile, birth and death characteristics, access to health care, chronic diseases, social issues, and other demographic characteristics. Data was collected and presented for the service area, Pacific County, and wherever possible, compared to Washington and National Benchmarks. Results of the demographic and secondary data can be found in Appendix 2.

The next section of this report presents a summary that highlights the data findings, and presents the key priorities identified through the CHNA.

## **Information Gaps**

Primary data was collected via a series of interviews. The responses reflect the opinions of the survey and interview respondents and may not reflect the needs of the entire community. Quantitative information for demographic and health status was available mainly at the County level. Therefore, to the extent that health status differs significantly between Northern Pacific County and Southern Pacific County, health information was not available at that granularity.

# Prioritization of Key Findings

Results from the three data collection methods including demographic data, primary data, and secondary data were analyzed. Significant findings were grouped into distinct categories with similar themes and related health challenges. These categories were prioritized by the CHNA Advisory Committee.

In July of 2019, members of the CHNA Advisory Committee were asked to rate the health issues identified previously according to three key variables, including:

- **SIZE** = How significant is the scope of the health issue - number of people affected?
- **SERIOUSNESS** = How severe are the negative impacts of this issue on individuals, families, and the community?
- **ABILITY TO IMPACT** = What is the probability that the community could succeed in addressing this health issue? (Consider community resources, whether there are known interventions, community commitment, etc.)

The committee convened after individually rating the health issues to come up with the top priorities as a group. The following five priorities were identified by the CHNA Advisory Committee:

## 1. Accessibility to Support Services for Seniors

The lack of accessibility to senior support services was a significant unmet health need identified through stakeholder interviews. Over half of stakeholders interviewed identified the elderly as a vulnerable population in the community. Stakeholders identified that demand for home care, assisted living, and minimal care assistance options for seniors in the community is outstripping the current supply of these services. This discrepancy is significant given the overall poorer health of seniors in the community: according to County Health Rankings data, 39% of seniors in Pacific County have difficulty performing daily activities and 28% of seniors have difficulty walking, 8% and 4% higher than state benchmarks, respectively. Limited transportation options in the community serves as an additional barrier to seniors accessing healthcare. Collectively, the lack of infrastructure in the community to care for an aging population can place strain on emergency response resources, especially for non-critical injuries and falls.

## 2. Chronic Disease Support Services

The lack of accessibility to chronic disease support services is most strongly demonstrated in the significant health risk outcomes that characterize the service area. According to County Health Rankings data, community members in Pacific County report significantly poorer physical health (6%) compared to the national benchmark (12%). Pacific County also observes higher rates of poor health indicators compared to state benchmarks, particularly for adult obesity (32% versus 26%), food insecurity (34% versus 20%), high cholesterol (43% versus 36%), high blood pressure (40% versus 30%), diabetes (12% versus 9%), heart disease (9% versus 6%), and arthritis (36% versus 25%). Moreover, 77% of seniors in the community are living with chronic disease.

While inaccessibility to support services negatively affects tertiary treatment for chronic disease, the lack of preventative patient education and access to healthy lifestyle choices may also contribute to poor chronic disease outcomes. Pacific County exhibits lower rates of diabetes screening, breast cancer screenings, and vaccinations compared to national benchmarks, indicating poorer preventative care efforts for chronic disease. Moreover, significantly fewer children in Pacific County receive well-child visits and the appropriate chronic diseases immunizations compared to state benchmarks. Multiple stakeholders reported that more preventative health education and community wellness initiatives would help patients learn to engage in preventative healthy behaviors, such as exercise, and maintain a healthy lifestyle. According to County Health Rankings data, 25% of adults in Pacific County are physically inactive, compared to the state benchmark of 17%. Moreover, only 66% of adults have access to adequate exercise opportunities, 21% lower than state benchmarks and 25% lower than national benchmarks. Investing in efforts to connect patients with the right



health care options and community resources could help not only manage existing chronic disease, but prevent it from occurring in the first place.

### **3. Mental Health / Substance Abuse**

Poor mental health and inaccessibility to treatment and resources for mental health and substance use profoundly impacts community health in the service area. The average number of poor mental health days for Pacific County is 4.5 per month, 1.4 days higher than the national benchmark. Constituents of Pacific County reported experiencing 14 or more days of poor mental health in the past year compared to state benchmarks (17% versus 12%). Suicide is a significant problem in Pacific County, where the suicide rate is 23.8 deaths per 100,000 people, 8 deaths higher than state benchmarks. Inappropriate substance use, such as alcohol, can contribute to risky behaviors: according to County Health Rankings data, 56% of driving deaths in Pacific County involved drivers impaired by alcohol, 23% higher than state benchmarks. Moreover, Pacific County observed 22 drug-related deaths in 2019, 7 deaths higher than state benchmarks.

Stakeholder interviews revealed that there are a limited number of providers and options for substance use treatment, particularly inpatient and detoxification services. Stakeholders identified the lack of funding for such programs, in addition to the shortage of behavioral health professionals being experienced across the state, have negatively affected access to behavioral healthcare. Inaccessibility of mental health services, especially outside of operating hours, can contribute to the misuse of emergency response resources. Stakeholders also reported that there is a disconnect between physical health and mental health services, which could be improved by coordinating services between physical and mental health providers. Similarly, stakeholders reported that improving case management services for mental health would better help connect patients with mental health resources in the community.



## Existing Health Care and other Facilities and Resources

Appendix 3 contains a complete list of health care and other facilities and resources available within the community to meet the health needs including location, contact information, and description of services.

## Evaluation of Previous Community Health Improvement Plan

The previous community health needs assessment conducted by Willapa Harbor included the following priorities:

Priority 1. Improve Access to Health Care and Support Healthy Aging

Priority 2. Promote Healthier Living, Healthy Families and Increase Awareness of Health Concerns

Willapa Harbor Hospital has made progress in response to the health-related priorities identified in the previous community health needs assessment. Specifically, Willapa Harbor has taken key steps to respond to each of the previous priority areas as follows:

Priority 1. Improve Access to Health Care and Support Healthy Aging

- a. Added an additional primary care provider
- b. Added a cardiac rehabilitation outpatient program to Willapa Harbor's service offerings
- c. Added SAIL Classes

Priority 2. Promote Healthier Living, Healthy Families and Increase Awareness of Health Concerns

- d. Increased infection control outreach to schools to improve drug awareness, CPR education, and early stroke identification
- e. Added suicide and mental health screening protocols in the Willapa Harbor emergency department and partnered with Willapa Behavioral Health to refer patients in need of these services
- f. Improved family planning services for women and women with children under the age of 5 years old, including counseling support and parenting classes, and developed a community network to support positive parenting
- g. Improved early accessibility to obstetrics care for pregnant women
- h. Hosted community breast cancer health awareness and screening, and cardiac disease education events to improve early detection, prevention, and management of these chronic diseases

# Appendix 1

## List of Participating Organizations for Community Input

The following are a list of organizations that had representatives who participated in the community input process of the CHNA.

- Area Agency on Aging
- Grays Harbor Community College
- Pacific County Public Health and Human Services Department
- 
- Raymond Fire Department and Emergency Medical Services
- South Bend School District
- Willapa Behavioral Health
- Willapa Harbor Hospital
  - Human Resources
  - Nursing
  - Quality, Risk, and Corporate Compliance

# Appendix 2

# Demographic Data Results

## Population

In 2019, the population for the service area was 9,237 people. According to future projections provided by ESRI for the service area, the population is expected to increase slightly over the next five years, by 1.7% or 160 people. Washington is anticipated to grow at a significantly faster rate of 6.7%, or 511,522 people, over the next five years, while the US population is expected to grow by 3.9%.

### 2019 and 2024 Population

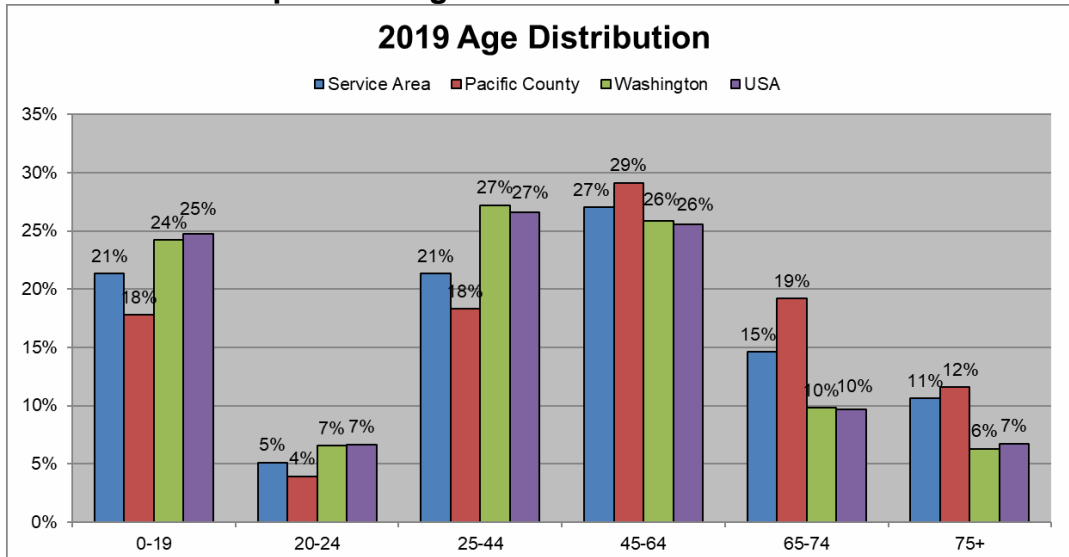
	2019	2024	% Change	Change
			(2019-2024)	(2019-2024)
Service Area	9,237	9,397	1.7%	160
Pacific County	21,518	22,043	2.4%	525
Washington	7,608,571	8,120,093	6.7%	511,522
USA	332,417,793	345,487,602	3.9%	13,069,809

Source: ESRI Business Information Solutions, 2019

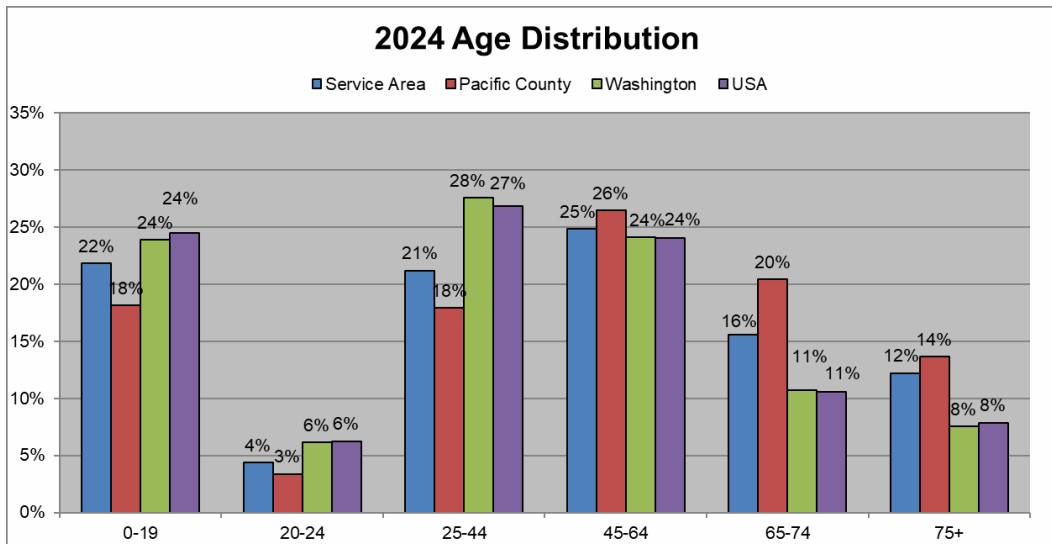
## Population by Age

Population was grouped into major age categories for comparison. In general, the service area has a higher proportion of people ages 45-64, 65-74 and 75+ than Washington and the Nation. Conversely, the proportion of people in all other age groups is lower than Washington and the Nation. The service area population is expected to continue aging over the next five years, as the proportion of people ages 65-74 and 75+ continues to slightly rise. This will likely cause a rise in health care utilization as older populations tend to utilize health care services at a higher rate. Health needs will also continue to shift toward disease categories that tend to present at an older age.

### 2019 and 2024 Population Age Distribution



Source: ESRI Business Information Solutions, 2019



Source: ESRI Business Information Solutions, 2019

## Population by Race and Ethnicity

The service area is predominantly white, with 78.8% of the population made up of white alone. The other race alone population makes up roughly 8.5% of the population, followed by multicultural equating to roughly 5.3% of the population. Other significant representation in the service area is people who identify as Asian (3.5%) and Alaska Native/Native American alone (3.3%). The service area is more racially diverse than the greater Pacific County area, which is predominately white alone (85%). However, the racial distribution in both of these areas are less diverse than the State of Washington and the Nation. All population cohorts are expected to become more racially diverse over the next five years. Given the more significant racial distribution in the service area, it is important that Willapa Harbor Hospital takes racial factors into consideration when providing care services to their community.

### 2019 and 2024 Population by Race

2019	Service Area		Pacific County		Washington		USA	
	Number	Percent	Number	Percent	Number	Percent	Number	Percent
White Alone	7,282	78.8%	18,291	85.0%	5,558,241	73.1%	231,366,780	69.6%
Black Alone	37	0.4%	85	0.4%	312,165	4.1%	42,966,551	12.9%
Alaska Native/Native American Alone	305	3.3%	550	2.6%	117,913	1.5%	3,258,605	1.0%
Asian Alone	327	3.5%	430	2.0%	692,850	9.1%	19,337,116	5.8%
Pacific Islander Alone	5	0.1%	45	0.2%	56,479	0.7%	647,138	0.2%
Some Other Race Alone	788	8.5%	1,228	5.7%	454,881	6.0%	23,225,287	7.0%
Two or More Races	493	5.3%	889	4.1%	416,042	5.5%	11,616,316	3.5%

2024	Service Area		Pacific County		Washington		USA	
	Number	Percent	Number	Percent	Number	Percent	Number	Percent
White Alone	7,197	76.6%	18,347	83.2%	5,778,259	71.2%	235,168,897	68.1%
Black Alone	40	0.4%	93	0.4%	347,128	4.6%	45,218,695	13.6%
Alaska Native/Native American Alone	320	3.5%	584	2.6%	126,234	1.7%	3,449,805	1.0%
Asian Alone	323	3.5%	433	2.0%	815,636	10.7%	22,256,747	6.7%
Pacific Islander Alone	10	0.1%	61	0.3%	63,833	0.8%	709,307	0.2%
Some Other Race Alone	959	10.4%	1,520	6.9%	516,833	6.8%	25,526,237	7.7%
Two or More Races	548	5.9%	1,005	4.6%	472,170	6.2%	13,157,914	4.0%

Source: ESRI Business Information Solutions, 2019



## Income

Income data was analyzed for the service area and Pacific County, then compared to the state of Washington and the Nation. 2019 data reveals that median household income, average household income, and per capita income for the service area and Pacific County is significantly lower than Washington and the Nation. In general, the service area median, average, and per capita income fall slightly above Pacific County metrics. Over the next five years, income levels are expected to rise in the service area, Pacific County, Washington, and the Nation in line with inflation.

### 2019 and 2024 Income Levels

2019	Service Area	Pacific County	Washington	USA
	Number	Number	Number	Number
Median Household Income	\$49,244	\$44,273	\$73,627	\$60,548
Average Household Income	\$64,138	\$61,446	\$99,689	\$87,398
Per Capita Income	\$26,260	\$28,030	\$38,706	\$33,028

2024	Service Area	Pacific County	Washington	USA
	Number	Number	Number	Number
Median Household Income	\$52,766	\$48,089	\$84,987	\$69,180
Average Household Income	\$69,644	\$66,101	\$115,574	\$99,638
Per Capita Income	\$28,531	\$30,198	\$44,805	\$37,585

Source: ESRI Business Information Solutions, 2019

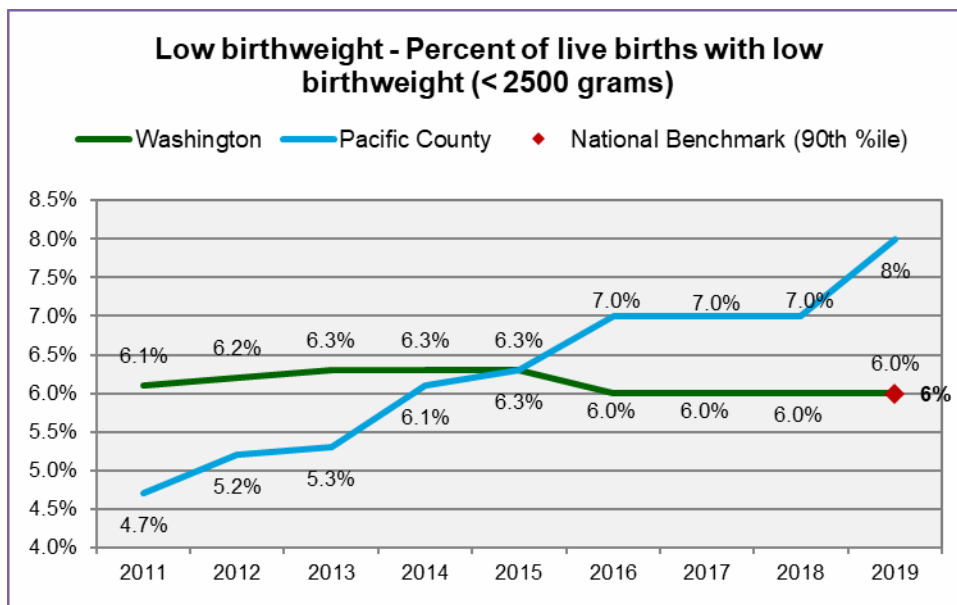
## Secondary Data Results

The County Health Rankings display health rankings of nearly every county in the nation and what influences the health of a county. They measure four types of health factors: health behaviors, clinical care, social and economic, and physical environment factors. In turn, each of these factors is based on several measures. A subset of the major health rankings is analyzed in this report.

Overall, Pacific County ranked 37th out of 39 counties ranked in the state for health outcomes based on the data collected by County Health Rankings. This ranking is slightly poorer than the 2016 ranking of 35<sup>th</sup> out of 39 counties.

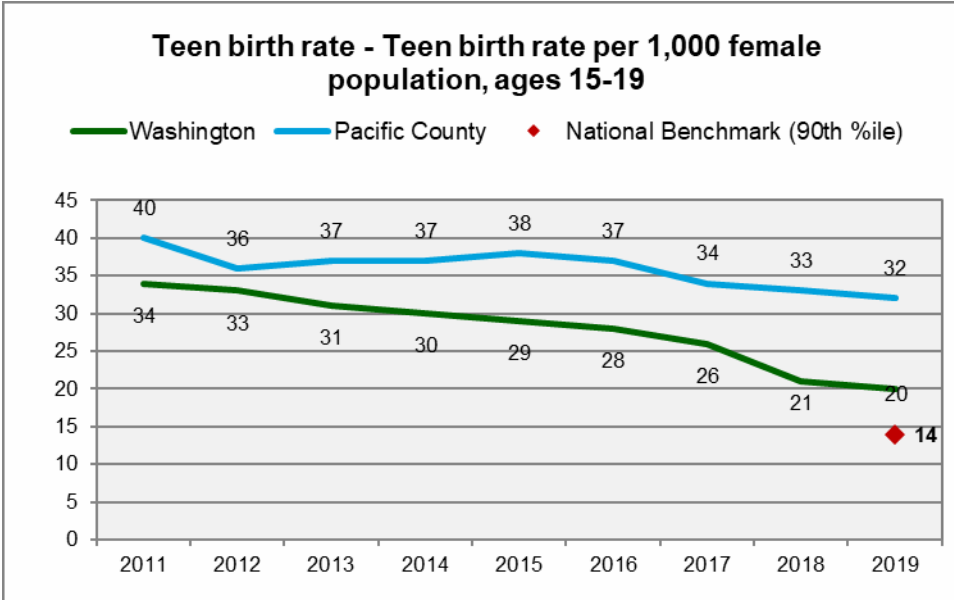
### Birth Statistics

Rates of low birthweight in a community are often associated with poor maternal health. Low birthweights can lead to higher incidences of fetal mortality, stunted growth, impaired cognitive developments, and higher risk of chronic disease in later life. Newborn birthweight is a strong predictor of newborn health and survival. Low birthweight percentages in Pacific County have been growing since 2011, reaching 8% of all newborn births in 2019. This is 2% above Washington and the national benchmark.

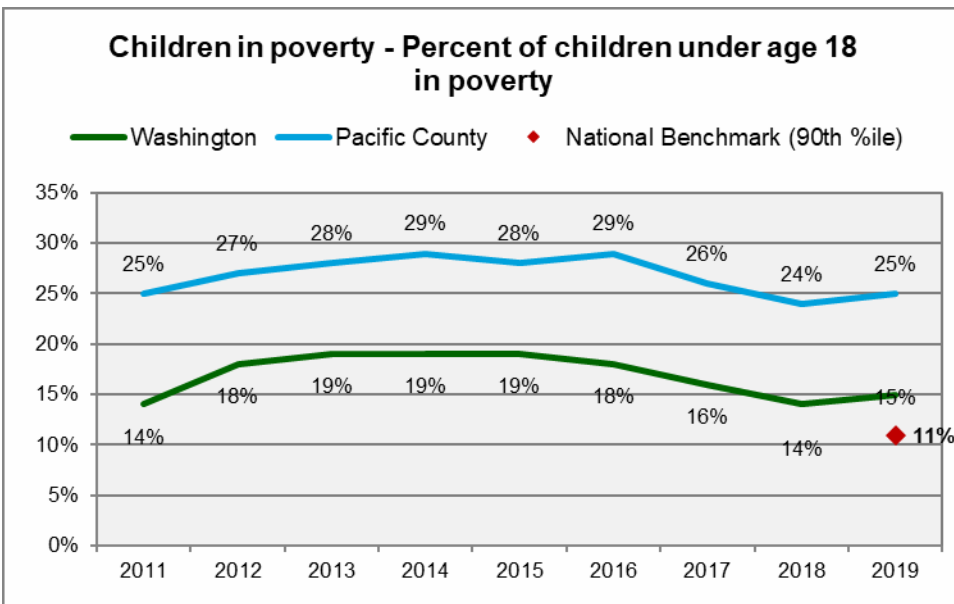


County Health Rankings, 2019

Teen birth rates were also analyzed for Pacific County. While the rate has been steadily decreasing over the past four years, teen birth rates in the Pacific County are significantly higher than Washington and over double the national benchmark. Similarly, the percentage of children in poverty in Pacific County is significantly higher than in Washington and the national benchmark, with a recent uptick observed in 2019. Children living in poverty is an important metric as poverty can often be associated with many negative health consequences throughout childhood and adulthood.



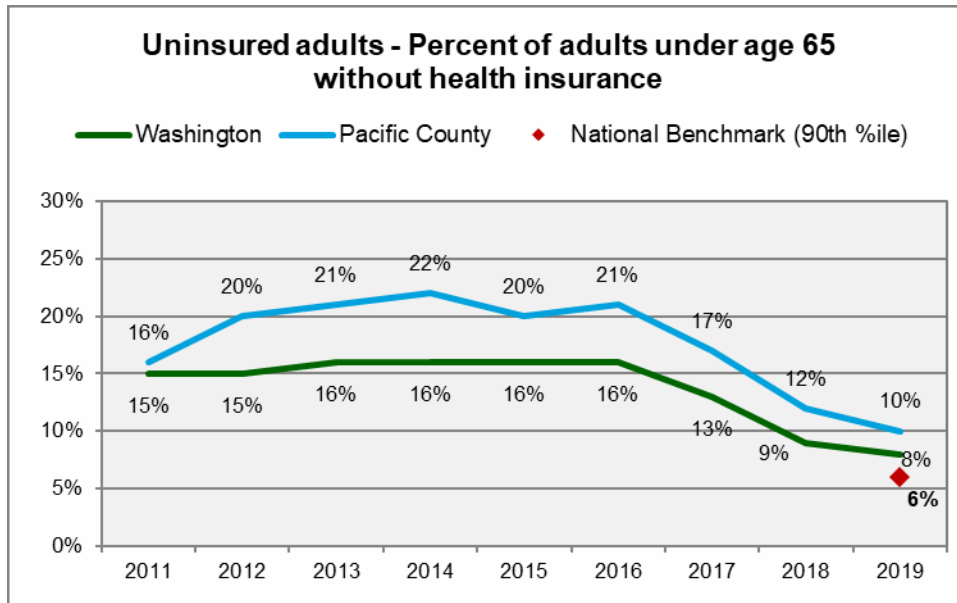
County Health Rankings, 2019



County Health Rankings, 2019

## Insurance

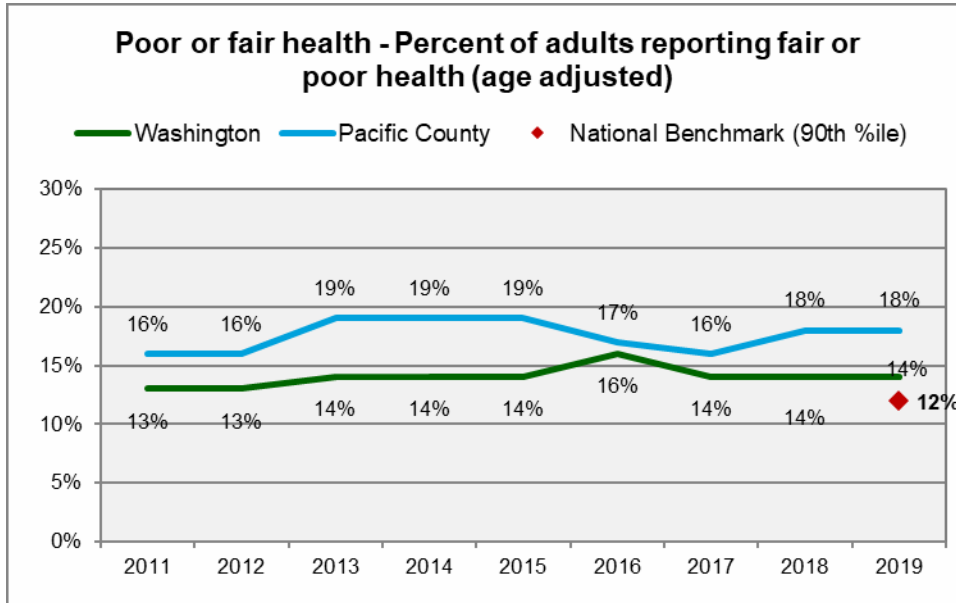
Individuals without health insurance often forego care due to high costs, which can lead to a higher prevalence of chronic conditions. The uninsured rate in Pacific County has decreased over the last three years to 11%, but remains higher than Washington's benchmark and almost double the national benchmark of 6%.



County Health Rankings, 2019

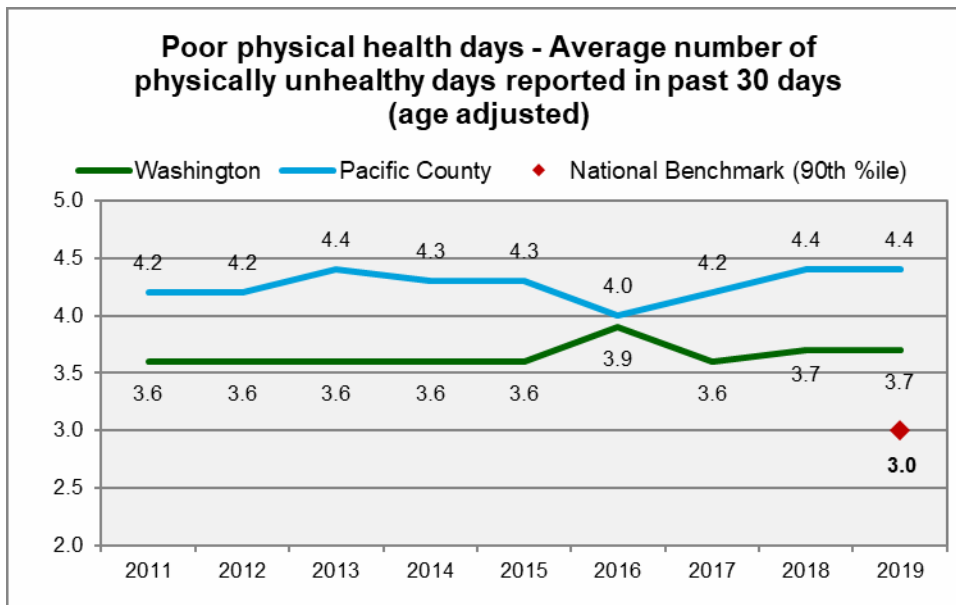
## General Population Physical Health

One measure of health among the community included in the County Health Rankings is reported general well-being. Reported “poor or fair health” in Pacific County was 4% higher than Washington, and both Pacific County and Washington rates are higher than the Nation. What this means is that the population in Pacific County considers themselves to be less healthy in general compared to state and national benchmarks.



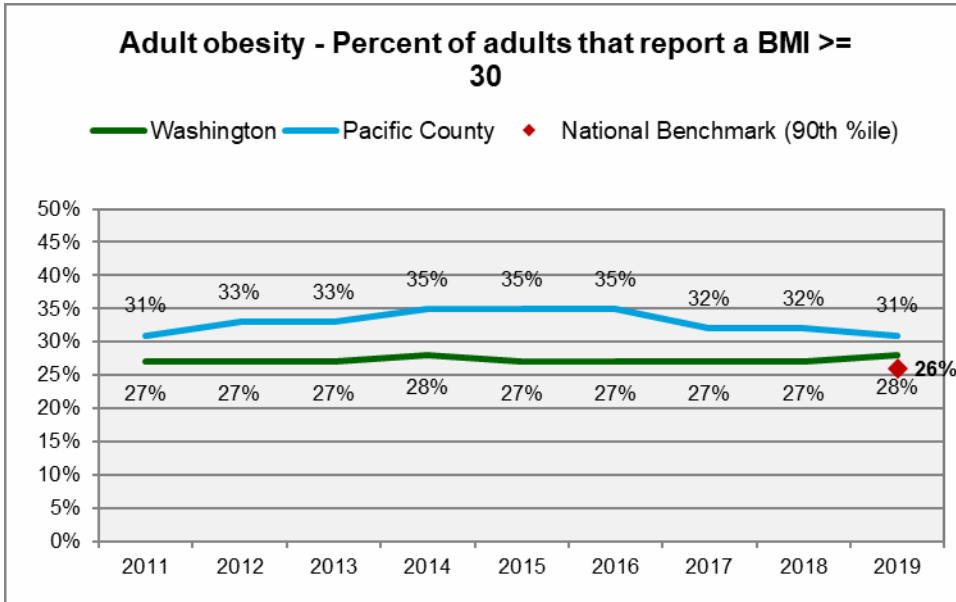
County Health Rankings, 2019

A similar self-reported measure is “poor physical health days”, which refer to days in which an individual does not feel well enough to perform daily physical tasks. Rates in Pacific County are 0.7 days above Washington and 1.4 days above the Nation. The rate has also been climbing in Pacific County since 2016, although no additional growth was observed in 2019. This is a negative indicator as people in Pacific County are reporting feeling worse physically compared to state and national benchmarks.

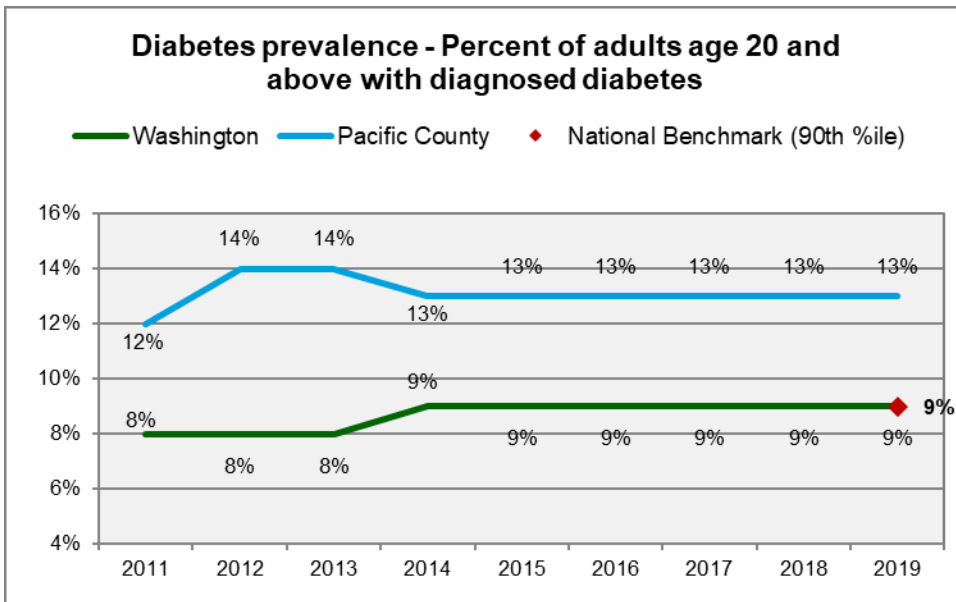


County Health Rankings, 2019

A third measure of general health of the population is the rate of adult obesity in the community. Nationally, the 90<sup>th</sup> percentile benchmark rate has been around 26% of the population. In Pacific County, the percentage of adults who are obese has remained fairly consistent over the last two years at about 31-32%. This rate is higher than Washington, where the obesity rate has remained steady at 27-28%. Similarly, diabetes prevalence in Pacific County has remained unchanged at 13% for the past 6 years, 4% higher than state and national benchmarks.



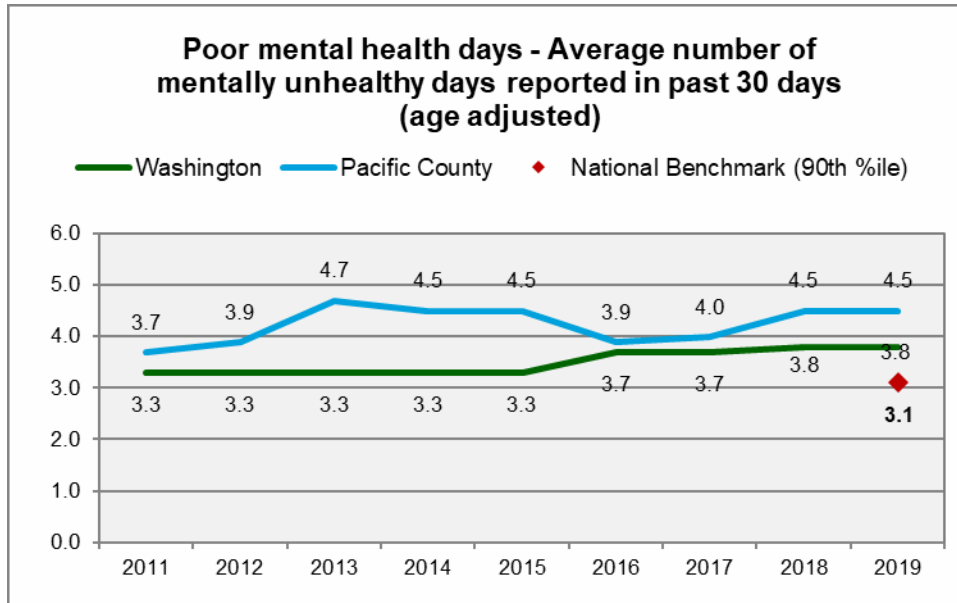
County Health Rankings, 2019



County Health Rankings, 2019

## General Population Mental Health

Another indicator, “Poor mental health days”, refers to the number of days in the previous 30 days when a person indicates their activities are limited due to mental health difficulties. The reported days in Pacific County are higher than Washington and the national benchmark. Rates have been trending upward in Pacific County since 2016 but have recently plateaued at 4.5 days in 2018 and 2019, 0.7 and 1.4 days greater than state and national benchmarks, respectively. Mental health remains a challenge in many communities across the country and is often associated with other negative health behaviors.

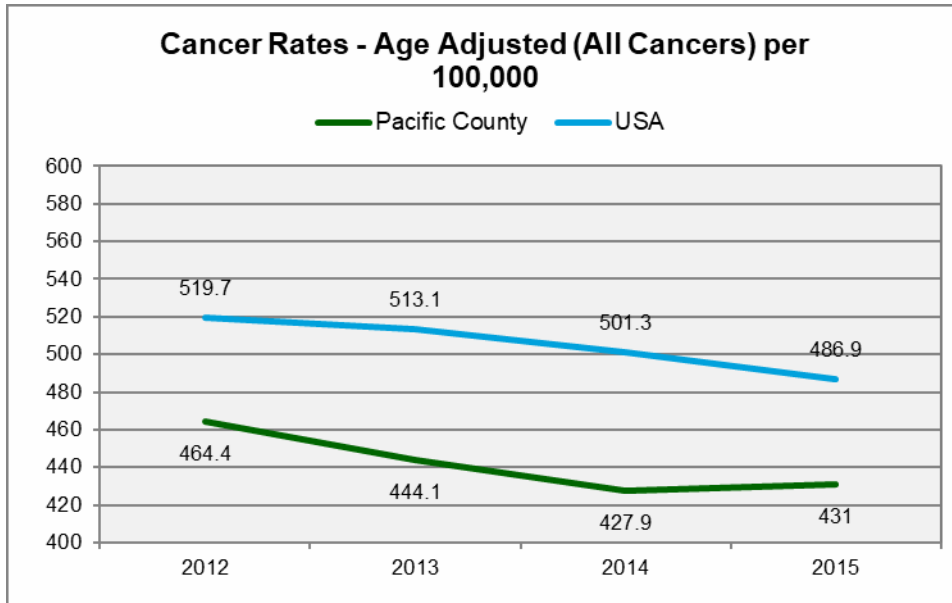


County Health Rankings, 2019



## Cancer Rates

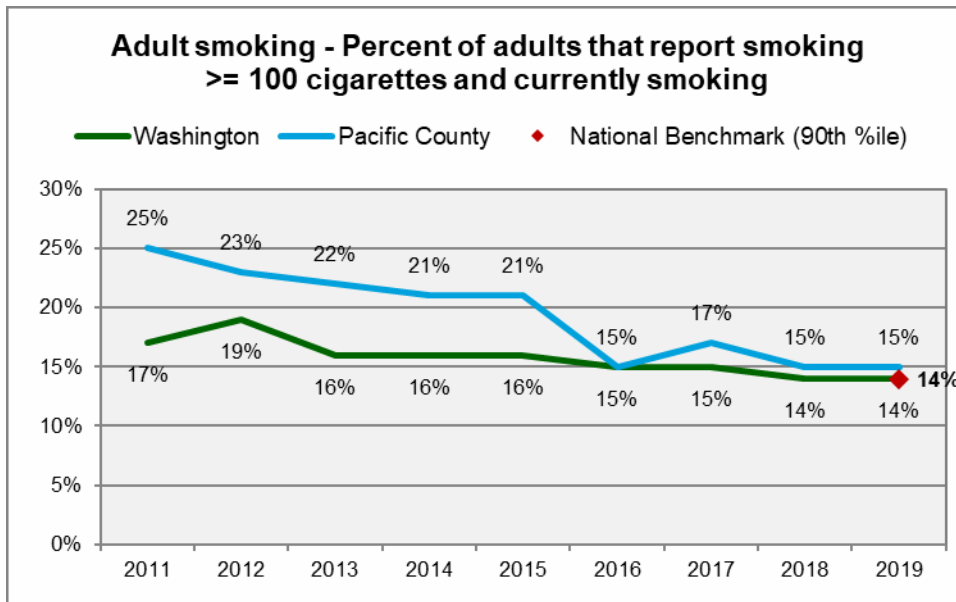
Data is collected nationally for cancer rates through cancer registries. Cancer rates for all cancers in Pacific County are 431 cancer diagnoses per 100,000 people, which is lower than national rates, though the cancer rate went up slightly in 2015, the most recent year reported.



Washington State Cancer Incidence Data: Washington State Department of Health, Washington State Cancer Registry, 2018

## Adult Smoking

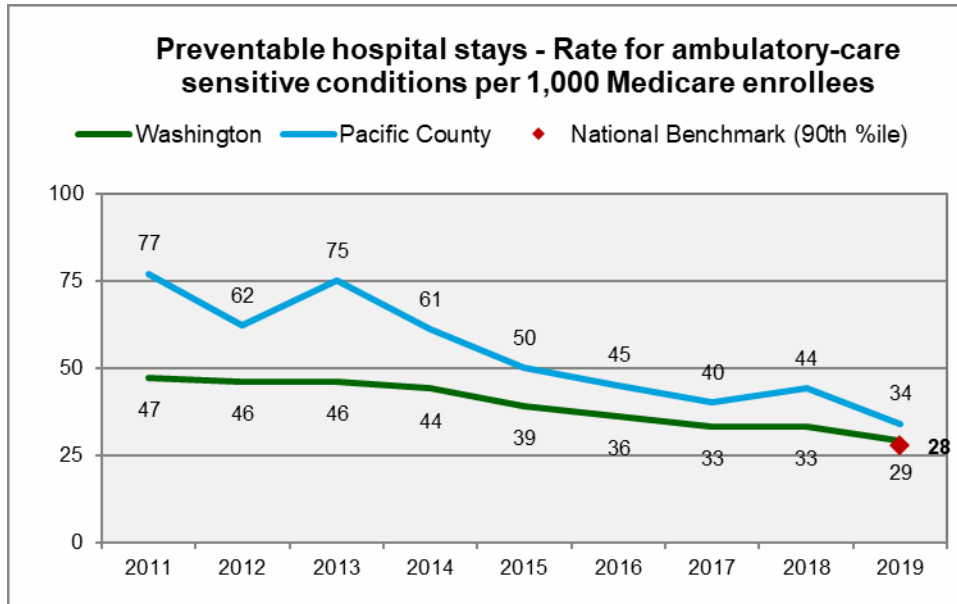
Cigarette smoking is a strong causal factor of various cancers, cardiovascular disease, and respiratory conditions, as well as low birthweight and other adverse health outcomes. Measuring the prevalence of tobacco use in the population can alert communities to potential downstream health outcomes and can be valuable for assessing either the need for cessation programs or the effectiveness of existing programs. The percentage of adults that report smoking in Pacific County has declined from 25% in 2011 to 15% in 2019. These rates are slightly above Washington and the national benchmark rate of 14%.



County Health Rankings, 2019

## Preventable Hospital Stays

Hospitalization for diagnoses treatable in outpatient services suggests that patients might not be seeking necessary preventive care, or that they are being admitted into the hospital for conditions that may be more appropriately treated on an outpatient basis. Rates for Pacific County declined from a high of 77 per 1,000 Medicare enrollees in 2011 to 34 per 1,000 in 2019. The rate has been consistently higher than the rate for Washington, and above the national benchmark of 28 per 1,000 Medicare enrollees.

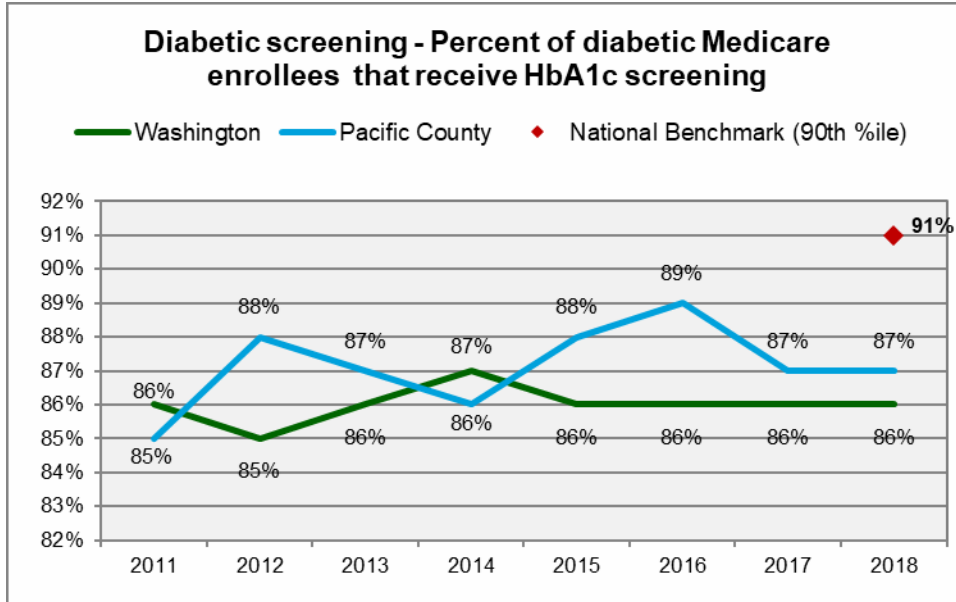


County Health Rankings, 2019

\*In 2019, the numbers were based on the rate of hospital stays for ambulatory-care sensitive conditions per 100,000 Medicare enrollees. In previous years, the numbers were based on the rate of hospital stays for ambulatory-care sensitive conditions per 1,000 Medicare enrollees. The 2019 rates were converted to the standard rate manually to allow for cross-comparison

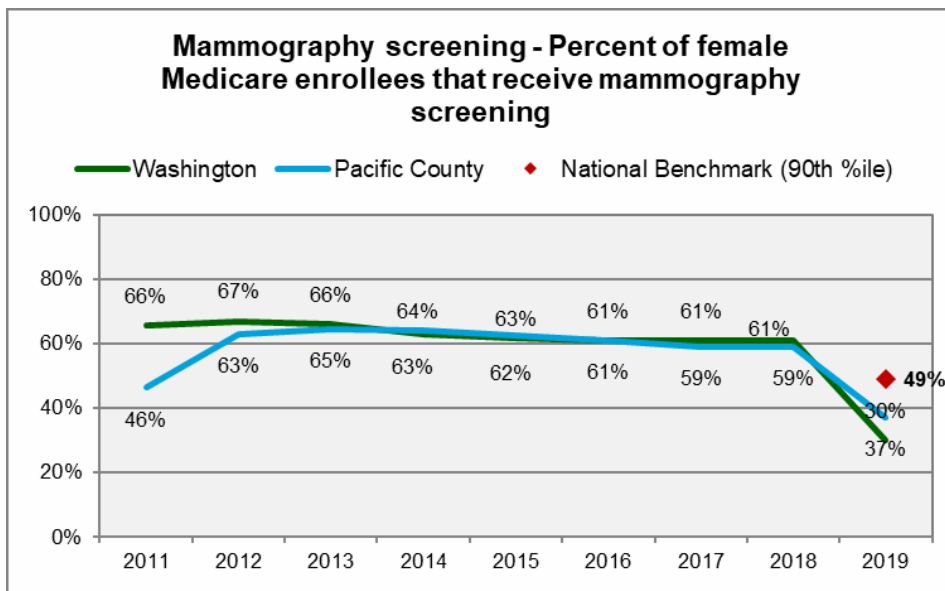
## Screening

Screening for potential health issues is a preventive measure that can detect early signs of health problems before they progress. Diabetes is one of the major health issues impacting our society today. Diabetes screening rates in Pacific County have decreased over the past three years from 89% in 2016 to 87% in 2018. While the rate is slightly higher than the Washington rate of 86%, it is well below the national benchmark rate of 91%.



County Health Rankings, 2019

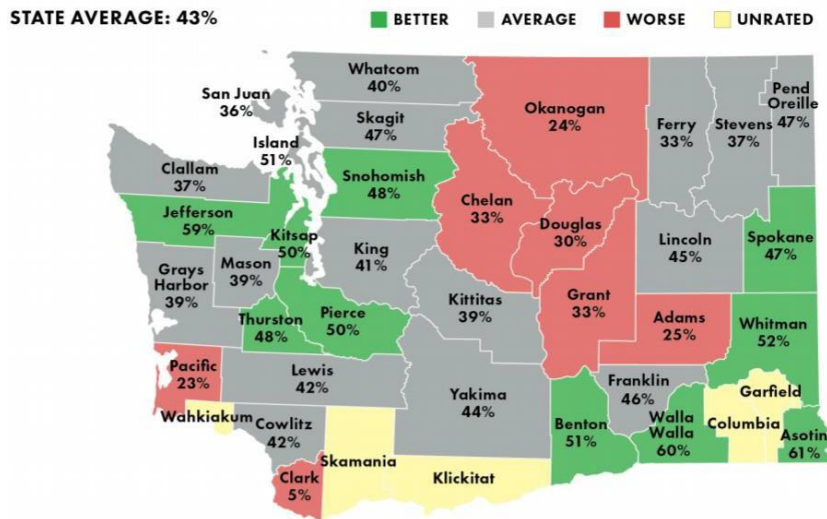
In 2019, the way mammography screening is measured was changed from previous years. Mammography screening is currently based on the percentage of female Medicare enrollees ages 65-74 that received an annual mammography screening. In prior years, it was based on the percentage of female Medicare enrollees ages 67-69 that received mammography screening. This expanded age range may contribute to the substantially lower screening rates observed in 2019. Mammography screening rates in Pacific County have remained relatively unchanged between 2016 and 2018, but recently decreased to 37% in 2019. These rates are slightly above the state benchmark of 30% and below the national benchmark of 49%. This is a negative indication as screening rates should ideally be rising.



County Health Rankings, 2019

## Well-Child Visits (in the first 15 months) for Medicaid Insurance

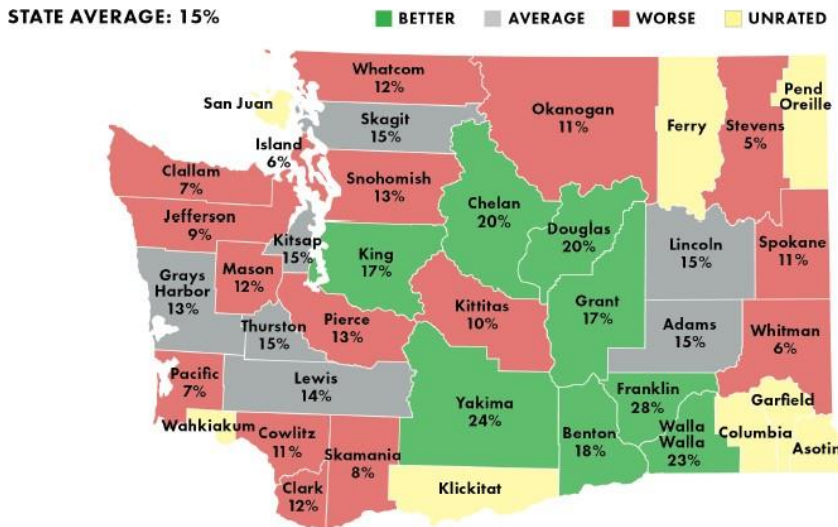
The percentage of well-child visits in the first 15 months in Pacific County is 23%, which is significantly lower than the state average of 43%.



Healthier Washington, 2017

## Immunizations by Age 13

The percentage of youth receiving immunizations by age 13 in Pacific County is 7%, which is lower than the state average of 15%.

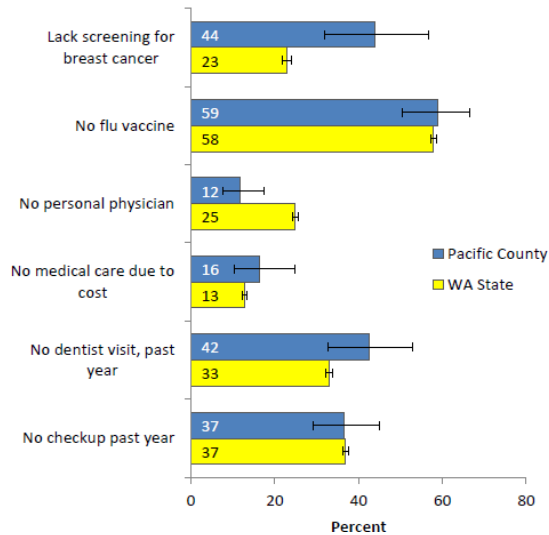


Healthier Washington, 2017

## Preventive Care

Adult preventive care markers, including disease screening, flu vaccination rates, health insurance, care avoidance, and dental utilization, all scored unfavorably for Pacific County compared to Washington State, with the exception of having a personal physician which favored Pacific County by 13% compared to Washington, and checkup utilization, which is in line with Washington.

### Adult (Age 18+) Preventive Care

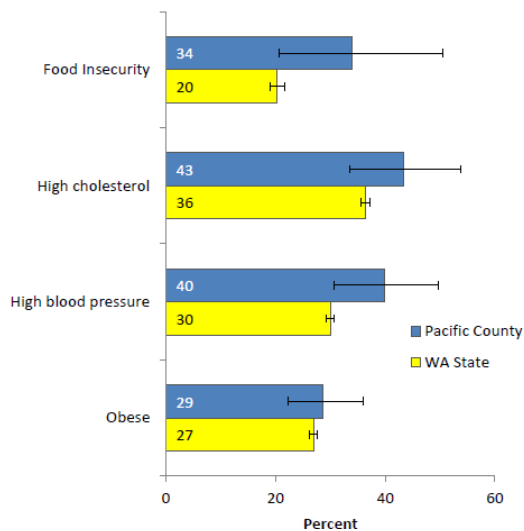


Washington Behavioral Risk Factor Surveillance System 2013-2015

## Health Risk Conditions

Health risk condition markers, including high cholesterol, high blood pressure and obesity all scored unfavorably for Pacific County compared to Washington State, with food insecurity topping the list at 14% higher than the state.

### Adult (Age 18+) Health Risk Conditions

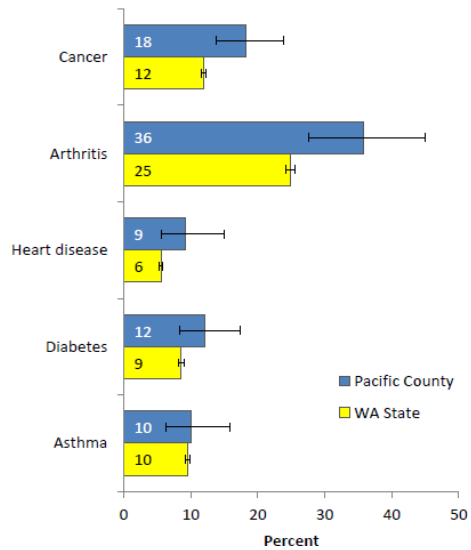


Washington Behavioral Risk Factor Surveillance System 2013-2015

## Chronic Disease

Chronic disease rates, including cancer, arthritis, heart disease, and diabetes, are all higher in Pacific County compared to Washington State, with the exception of asthma prevalence being in line with state benchmark rates.

### Adult (Age 18+) Chronic Disease

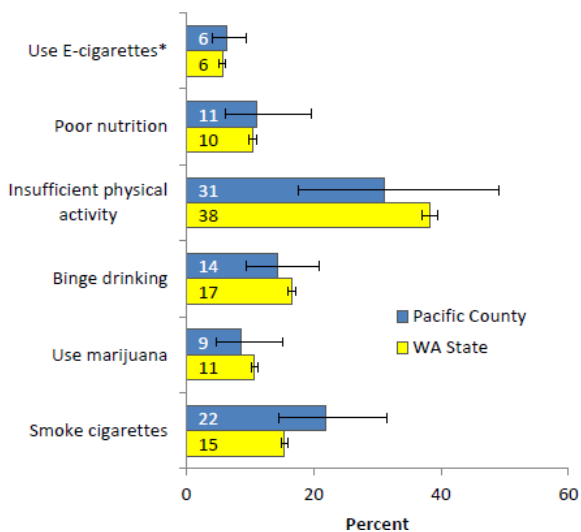


Washington Behavioral Risk Factor Surveillance System 2013-2015

## Health Risk Behaviors

Pacific County has more favorable rates of physical activity levels, binge drinking, and marijuana use compared to Washington State. In terms of cigarette use, Pacific County has significantly less favorable rates.

### Adult (Age 18+) Health Risk Behaviors

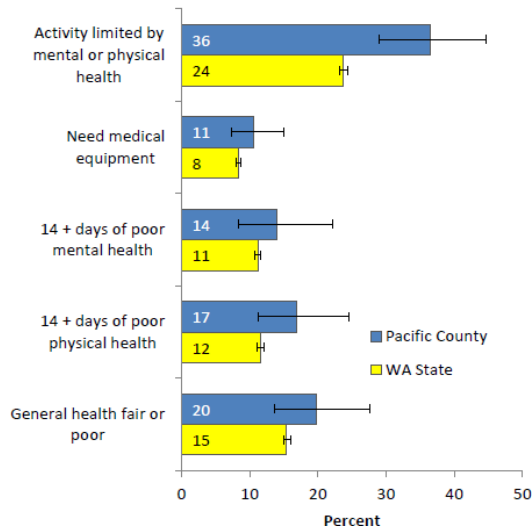


Washington Behavioral Risk Factor Surveillance System 2013-2015

## Quality of Life

Across all the quality of life measures, Pacific County fared less favorably compared to Washington State, including activity limitations due to mental or physical health, medical equipment needs, poor mental and physical health days, and general health considered fair or poor.

### Adult (Age 18+) Quality of Life

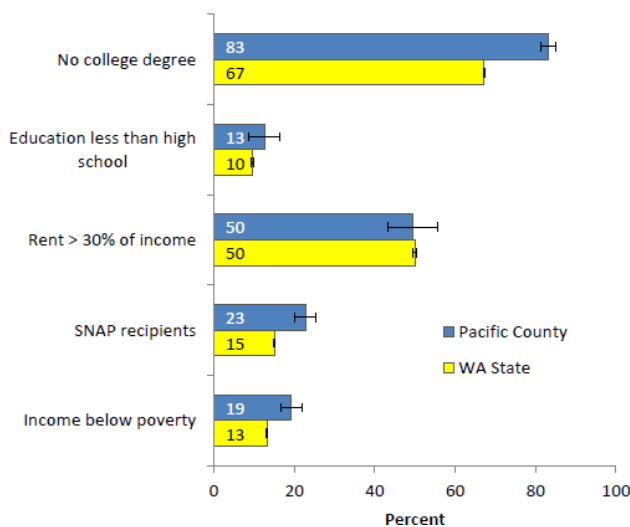


Washington Behavioral Risk Factor Surveillance System 2013-2015

## Social and Economic Risk Factors

With the exception of rent > 30% of income levels, which falls in line with state benchmarks, Pacific County had unfavorable rates compared to Washington State in rates of health insurance, college degrees, education less than high school, recipients of food assistance, and income below the poverty level.

### Social and Economic Risk Factors

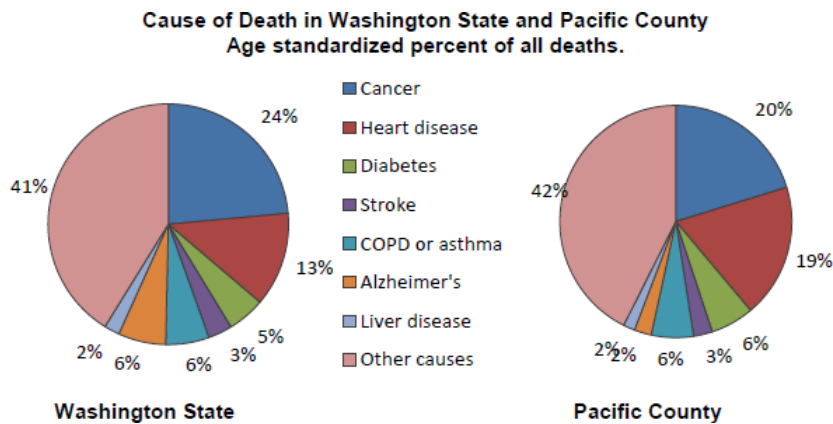


Washington Behavioral Risk Factor Surveillance System 2013-2015



## Cause of Death in Washington State and Pacific County

Generally, the leading causes of death in Pacific County and Washington State are similar, however Pacific County has a slightly higher percentage of deaths due to other causes. The leading causes of death include other causes, cancer, heart disease, diabetes, COPD or asthma, Alzheimer's, and liver disease.



Washington Behavioral Risk Factor Surveillance System 2013-2015

## Access to Primary Care (Commercial Insurance)

Pacific County falls within Washington State averages in terms of access to primary care among most age groups. However, Pacific County measures less favorably for the 2-6-year olds and 7-11-year olds age groups.

### PACIFIC COUNTY Commercial Insurance

Measure	Rate	Score	State Average
Access to primary care (ages 12-19 years)	88%	AVERAGE	90%
Access to primary care (ages 20-44)	92%	AVERAGE	92%
Access to primary care (ages 2-6 years)	81%	WORSE	89%
Access to primary care (ages 45-64)	94%	AVERAGE	96%
Access to primary care (ages 65+)	97%	AVERAGE	98%
Access to primary care (ages 7-11 years)	81%	WORSE	90%

Healthier Washington 2016 Community Checkup Results

## Access to Primary Care (Medicaid Insurance)

Similar to the commercially insured population, Pacific County measures less favorably than Washington State in terms of access to primary care for 2-6 and 7-11-year olds. Pacific County also measures less favorably for 12-19-year olds compared to Washington State.

### PACIFIC COUNTY Medicaid Insurance

Measure	Rate	Score	State Average
Access to primary care (ages 12–19 years)	81%	▼ WORSE	86%
Access to primary care (ages 12–24 months)	87%	■ AVERAGE	89%
Access to primary care (ages 20–44)	68%	■ AVERAGE	71%
Access to primary care (ages 2–6 years)	67%	▼ WORSE	75%
Access to primary care (ages 45–64)	82%	■ AVERAGE	75%
Access to primary care (ages 65+)	81%	■ AVERAGE	84%
Access to primary care (ages 7–11 years)	76%	▼ WORSE	86%

Healthier Washington 2016 Community Checkup Results

# Appendix 3

## Existing healthcare resources:

- **Willapa Harbor Hospital**  
80 Alder St. South Bend, WA, 98586  
360-875-5526  
Services provided: Family practice, medical and surgical care, emergency room, cardiac rehabilitation, respiratory therapy, medical imaging, and laboratory services.
- **Willapa Harbor Hospital Clinic**  
360-875-5526  
Services provided: Family practice, geriatrics.
- **Willapa Family Medicine**  
810 Alder St. South Bend, WA, 98586.  
360-875-4502  
Services provided: Family practice as well as inpatient care at Willapa Harbor Hospital.
- **Basics NW**  
8282 28<sup>th</sup> Court NE, Suite #A. Lacey, WA, 98516  
360-915-6868  
Services provided: Applied behavior analysis (ABA) intervention services, primarily for patients with autism.
- **Fresenius Kidney Care**  
2012 Industrial Pkwy. Aberdeen, WA, 98520  
800-881-5101  
Services provided: In-center and at-home hemodialysis, at-home peritoneal dialysis, and KidneyCare educational classes.
- **Pacific Family Health Center**  
826 Alder St. South Bend, WA, 98586  
360-875-5579  
Services provided: Family practice, geriatrics.
- **Valley View Health Center**  
300 Ocean Ave. Raymond, WA, 98577  
360-942-3040  
Services provided: Medical, dental, behavioral health, and pharmacy. Discount prescriptions available to the under or uninsured with an inability to pay for their medications.
- **Ocean Beach Hospital**  
174 1st Avenue N. Ilwaco, WA, 98624  
360-642-3181  
Services provided: Emergency department, blood draw services, cardiac rehabilitation, cardiac ultrasound, community education, family practice, general surgery, internal medicine, laboratory services, mammography, nuclear medicine, oncology, physical therapy, pulmonary rehabilitation, radiology, women's health, and orthopedics.

- **Shoalwater Bay Wellness Center**  
2373 Old Tokeland Rd. Tokeland, WA, 98590  
360-267-0119

Services provided: Family practice, dental, behavioral health, chemical dependency, diabetic counseling, nutritional counseling, and community health services. Wellness center is open to the public and available at no cost for enrolled Tribal members.

### ***Home Health and Geriatric Services***

- **Alder House Assisted Living Facility**  
801 Alder St. South Bend, WA, 98586  
360-875-6001

Services provided: Assisted living, assistance with activities of daily living, and transportation.

- **Harbors Home Health and Hospice**  
201 7th St. Hoquiam, WA, 98550  
360-532-5454

Services provided: Home care services, physical therapy, occupational therapy, nursing care, and speech/language therapies provided in the home for those who are acutely, chronically or terminally ill, or disabled, and home health aides. Medical Social Workers assist in arranging other services needed, financial assistance, and counseling.

- **Olympic Area Agency on Aging**  
1715A Pacific Ave. North. Long Beach, WA, 98631  
888-571-6558 or 360-642-3634  
430 3rd. Street Raymond, WA, 98577  
888-571-6557 or 360-942-2177

Services provided: Washington Health Benefit Exchange (“HBE”), Healthplan finder for assistance signing up for ACA insurance plans, and family caregiver support services.

- **Willapa Harbor Home Health & Rehabilitation**  
1100 Jackson St. Raymond, WA, 98577  
360-942-2424

Services provided: Short-term rehabilitation, 24-hour skilled nursing care, physical therapy, occupational therapy, speech therapy, post-stroke rehabilitation, orthopedic rehabilitation, respiratory and cardiac rehabilitation, wound care, medication management, pain management, long-term care, palliative care, psychology services, and resident and family support services.

### ***Mental Health and Substance Use Resources***

- **Discovery Recovery**  
800 Washington Street N. Long Beach, WA, 98631  
844-288-4672

Services provided: Drug and alcohol treatment center, detoxification, and a residential treatment facility.

- **Evergreen Treatment Center**  
 804 Levee St. Hoquiam, WA, 98550  
 360-209-6339  
 Services provided: Medication-assisted treatment, assessment and treatment planning, methadone or buprenorphine-based medication, regular and random drug screens, STD testing and education, individual and group counseling, psychoeducational groups, physical examinations, and acupuncture.
- **Free by the Sea**  
 25517 Park Ave. Ocean Park, WA, 98640.  
 800-272-9199  
 Services provided: Residential drug addiction and rehabilitation center.
- **Future Vision Programs, Inc. (King County – Several Hours Away)**  
 620 M St. NE, #2. Auburn, WA, 98002  
 253-735-2718  
 Services provided: Intensive outpatient treatment for chemical dependency, relapse prevention programs, alcohol and drug evaluation and assessment, urinalysis, assistance with inpatient placement, outpatient counseling, and employee assistance evaluation and programs.
- **Lifeline Connections**  
 1006 Robert Bush Dr. W. South Bend, WA, 98586  
 360-787-9319  
 Services provided: Detoxification treatment, substance use residential treatment programs, substance use outpatient treatment programs, mental health and co-occurring outpatient treatment, medication-assisted treatment, deaf and hard-of-hearing treatment, drug screening, and therapeutic specialty courts.
- **Shoalwater Wellness Center - Behavioral Health**  
 2373 Old Tokeland Rd. Tokeland, WA, 98590  
 360-267-8141  
 Services provided: Mental health and chemical dependency treatment services.
- **True North Student Assistance**  
 1016 Commercial St. Raymond, WA, 98577  
 360-942-2474 ext. 2141  
 Services provided: Provides assessments, outpatient, and intensive outpatient drug and alcohol treatment services for youth in north Pacific County.
- **Willapa Behavioral Health**  
 2204 Pacific Ave. N. Long Beach, WA, 98631  
 360-642-3787  
 Services provided: Community mental health and chemical dependency (drug and alcohol) treatment and support services. Outpatient, intensive outpatient, case management, alcohol drug information school (ADIS), and referral to inpatient if necessary.

### ***General Social and Welfare Services***

- **Pacific County Public Health & Human Services**

Pacific County Courthouse Annex. 1216 West Robert Bush Dr. South Bend, WA, 98586  
360-875-9343

Services provided: Health promotion, communicable disease prevention, emergency preparedness, family and child health, family planning and women's health, and other resources for health care providers.

- **Washington Department of Social & Health Services**

2601 Pacific Avenue N. Long Beach, WA, 98631  
1-877-501-2233

Services provided: Online benefit portal (Washington Connection) that serves as a convenient way for families and individuals to apply for a variety of services such as food, cash, child care, long-term care, and Medicare savings programs. Individuals that are age 65 or older, blind or disabled may also apply for medical assistance. Insurance database (**Washington Healthplanfinder**) that offers healthcare coverage for children, parents/caretakers with children, pregnant women, or adults age 18 to 64 years old.

### ***Pharmacies***

- **South Bend Pharmacy**

101 Willapa Ave. South Bend, WA, 98586  
360-875-5757

- **Raymond Pharmacy**

515 Commercial St. Raymond, WA, 98577  
360-942-2634

### ***Alternative Care***

- **Kent Chiropractic Clinic PS**

4403 Pacific Way. Long Beach, WA, 98631  
360-642-4390

- **Long Beach Chiropractic Clinic**

1108 Pacific Ave. Long Beach, WA, 98631  
(360) 642-8588

- **Willapa Chiropractic & Massage**

326 E. Commercial St. Raymond, WA, 98577  
360-942-2414

- **Riverview Chiropractic**

625 Heath St. Raymond, WA 98577  
360 942-3232



### ***Vision***

- **Coastal Eye Care**  
1703 S. Pacific Hwy. Long Beach, WA, 98631  
360-642-3214
- **Pacific Eye Clinic**  
500 Willapa Place. Raymond, WA, 98577  
360-942-5501

### ***Dental***

- **Deep River Dental**  
416 4<sup>th</sup> St. Raymond, WA, 98577  
360-942-3600
- **South Beach Dental Clinic**  
518 Duryea St. Raymond, WA, 98577  
360-942-5773
- **Townsend Denture Clinic**  
302 Robert Bush Drive W. South Bend, WA, 98586  
360-875-6063  
Services provided: Dentures, partial dentures, relines and denture repairs.
- **Valley View Dental Clinic**  
300 Ocean Ave. Raymond, WA 98577  
360 942-3040